

DELIGHTING YOU WITH OUR ASIAN TREASURE

SOLID TIMBER FLOORING

PROFESSIONAL
SURFACES 

AT PROFESSIONAL SURFACES, WE
CARRY A WIDE ARRAY
OF TIMBER FLOORING FOR RESIDENTIAL
AND COMMERCIAL USE, CATERING TO A
VARIED CLIENT BASE.





ABOUT US . Established since 1998, Professional Surfaces Sdn Bhd is one of Malaysia's leading flooring specialists. The company started off by supplying and installing carpet and vinyl flooring to projects all over the country.

Today, Professional Surfaces is also involved in offering the customer total timber utilization solutions. We supply and install solid timber flooring of the highest quality that carries our brand name Asian Treasure. We are also involved in the production of engineered wood.

A close-up photograph of a person's hand holding a yellow tape measure against a piece of dark-stained wood. The tape measure is extended, showing numbers from 4 to 11. Below the wood being measured, there are several other pieces of wood in various shades of brown, some lighter and some darker, stacked on a wooden surface. The background is blurred, showing a green outdoor area.

OUR ATTENTION TO DETAIL

IN OUR DELIVERY SERVICES
TO THE CLIENT HAS PLACED
US AT THE FOREFRONT OF
THE INDUSTRY.



OUR COMMITMENT . With in-depth knowledge of the industry, and expertise in handling most types of timber materials, we are well-positioned to offer our clients superior solutions to meet their exacting needs.

In addition, our skilled staff are hands-on to manage and ensure the professional installation of all projects. We pride ourselves in providing only the very best timber solutions through our own home-grown brand, Asian Treasure.





HIGH TECHNOLOGY & INNOVATION .

Our partners in the business, the Uzin-Utz Group, are Germany's premier manufacturer and marketer of wood flooring installation systems. The company, listed on the German Stock Exchange, work in tandem with us to provide world-class technical assistance to clients.

Our staff receive regular training and are equipped with the latest technical know-how to ensure high quality and consistent service to clients. For large-scale projects, our German partners are on-hand and on-site to supervise and monitor progress, underlining our commitment to quality and a high level of workmanship.



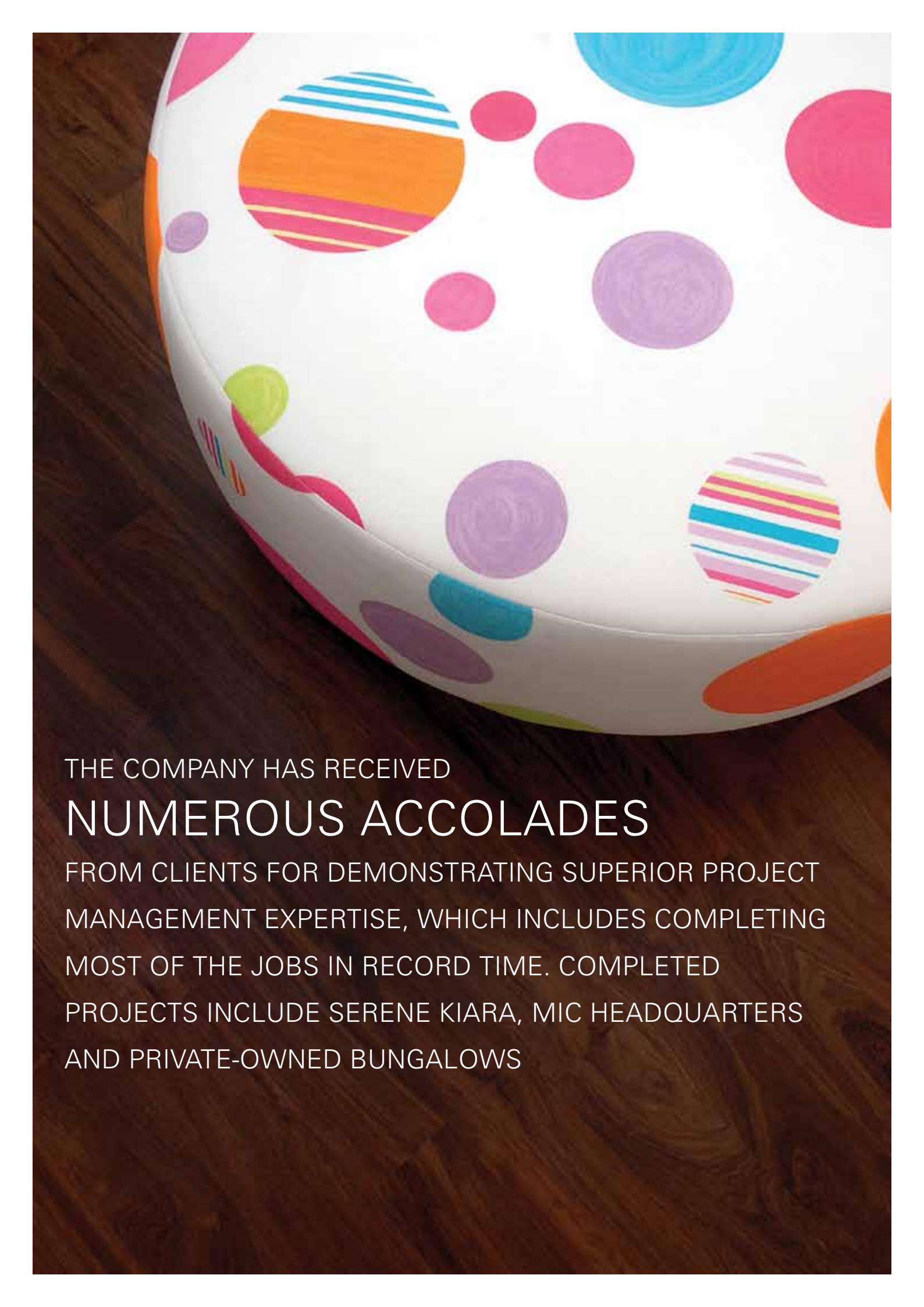
ADHESIVE &
SELF-LEVELLING



FLOORING
TOOLS



TIMBER COATING

A large, colorful, patterned ball, possibly a beach ball or a decorative sphere, is the central focus of the image. It features a white base with various colored circles and stripes in shades of pink, blue, orange, purple, and green. The ball is resting on a dark wooden floor with a visible grain pattern. The lighting is soft, highlighting the textures of the ball and the floor.

THE COMPANY HAS RECEIVED

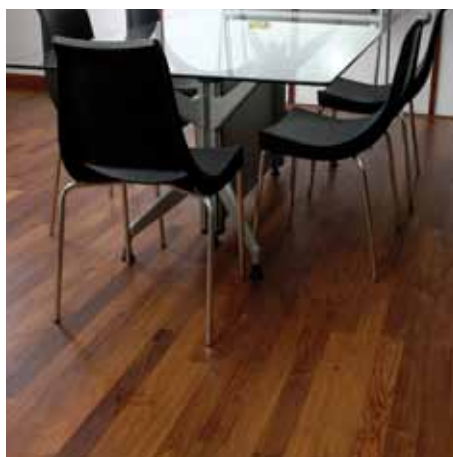
NUMEROUS ACCOLADES

FROM CLIENTS FOR DEMONSTRATING SUPERIOR PROJECT MANAGEMENT EXPERTISE, WHICH INCLUDES COMPLETING MOST OF THE JOBS IN RECORD TIME. COMPLETED PROJECTS INCLUDE SERENE KIARA, MIC HEADQUARTERS AND PRIVATE-OWNED BUNGALOWS

OUR ACHIEVEMENTS . Professional Surfaces supplies and installs an impressive range of superior timber floorings for homes, offices, hotels, hospitals, and other projects. All of which are customized to meet the demands and specific requirements of the client.

Having being involved in some very prestigious, up-scale housing projects such as the high-end development in Serene Kiara and numerous private residences in the Klang Valley, Professional Surfaces has already begun to explore international markets.

The company has successfully penetrated the highly competitive Vietnamese market, and has plans to move into the Indian market in the near future.





LIVE



ENDLESS ENJOYMENT . Bask in the natural, inviting warmth of wood. Timber flooring, with their naturally beautiful appearance, can transfer the look and feel of any room in a home, adding a touch of elegance, while creating a feast for the senses.

The stylish and sophisticated appeal of timber flooring offers unlimited scope and flexibility in design alternatives. The rich hues and colours, coupled with a dazzling palette of wood grain patterns make timber floorings choice options for any style of décor.

Timber's allergen-free properties, superior strength and long life-span also make it a popular choice for house owners with growing families. Indulge and pamper your loved ones with the luxurious feel of timber wood floorings.



A photograph of a conference room. In the foreground, a polished wooden floor with a vertical grain pattern is visible. In the middle ground, several black ergonomic office chairs with silver metal bases are arranged around a glass-topped conference table. In the background, a whiteboard is mounted on a stand against a wall. To the right, there is a glass partition wall with a wooden frame. The word "WORK" is overlaid in large, white, sans-serif capital letters across the lower half of the image.

WORK



MAKE A STATEMENT . Define the character of your workplace with the use of solid timber flooring which reflect style and success.

The durability, versatility and visual appeal of timber flooring make it well-suited for use in the commercial sector. Timber's ease of maintenance, coupled with its ability to withstand high-traffic usage and its long-lasting performance, also make it a popular option for the office place.

The classic allure of timber flooring put the final touches of finesse to any corporate office, enhancing the profile and prestige of the company brand name.





Good timber does not grow with ease
The stronger wind, the stronger trees
The further sky, the greater length
The more the storm, the more the strength
By sun and cold, by rain and snow
In trees and men, good timber grow

POEM BY DOUGLAS MALLOCH



ABOUT *Asian Treasure*

Sourcing only the best timber, we are highly selective in the wood species we make available – longevity and performance are critical considerations to ensure good timber products.

Our Asian Treasure range includes a wide array of high quality timber from the region and also Europe. European species include Oak, Maple, Ash, German Beech, Cherry and other selected hardwood timber.

In responding to the demand for more earth-friendly products, we also source our timber from sustainable plantations. We are also able to supply underwater timber, whereby no deforestation has taken place. So you can rest assured, and use our Asian Treasure range knowing that there was minimal impact to the environment.

Timber's combination of unique characteristics such as rigidity, warmth, longevity, charisma, multiple usage, strength, ease of fabrication and toughness, coupled with its excellent insulating properties and diversity of styles, makes it a building material that is second to none.



ASIAN TREASURE RANGE OF TIMBER FLOORING



INDIAN LAUREL
(*Terminalia tomentosa*)

- Heartwood is walnut brown to dark brown, finely streaked with darker lines. Turns darker brown with ageing.



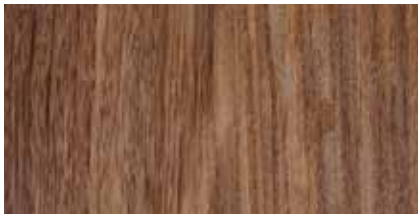
BURMESE TEAK
(*Tectona grandis*)

- Heartwood is pale yellow to orange-brown with darker striping when freshly cut, all of which mellows into medium brown tones.



IRON WOOD
(*Xylia dolabriformis benth*)

- Heartwood is reddish brown with few markings. Turns reddish brown with ageing.



ASIAN SUCUPIRA
(*Pericopsis*)

- Heartwood is strong and even brown colour with attractive dark lines.



MERBAU
(*Intsia palembanica*)

- Heartwood is yellowish to orange-brown when fresh, weathering to brown or dark red brown.



KERANJI
(*Dialium spp.*)

- Heartwood is gold brown or red brown weathering to dark brown.



AMYRIS
(*Amoora wallichii*)

- Heartwood is reddish pink with close grain structure and even textured.



OAK
(*Quercus spp*)

- Heartwood is light brown.



CYPRESS
(*Cupressaceae*)

- The heartwood varies from light to dark yellow brown. Grain is very fine and knots are common. The wood has a distinctively strong aromatic odour.



WENGE
(*Millettia laurentii*)

- The heartwood is dark brown, mostly black, with fine, closely spaced, very dark veins and white lines. The combination of white bands against the dark wood with black streaks.



SONOKELING
(*Dalbergia latifolia*)

- Heartwood is deep purple brown, reddish brown, sometimes greenish brown, more or less striped, hard and heavy.



TIN WIN
(*Millettia pendula benth*)

- Heartwood is purplish brown to dark brown, striated with dark and light tissue zones that make it spectacular.

Asian Treasure

www.prosurfaces.net

Professional Surfaces Sdn Bhd
Lot 540, Sub-Lot A-12, Jalan Subang 2
Sungai Penaga Industrial Park
47500 Subang Jaya, Selangor
MALAYSIA

T . 603 8023 3212
F . 603 8023 2449
E . info@prosurfaces.net

PROFESSIONAL
SURFACES 